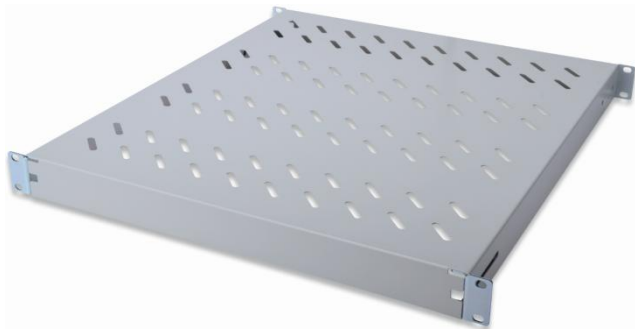


## DIGITUS® Shelves for 19" cabinets with 600 mm depth



- ✓ Easy installation
- ✓ Sturdy, perforated sheet steel
- ✓ Variable in depth
- ✓ Available in grey and black color

### Abstract

DIGITUS® Shelves for 19" cabinets with 600 mm depth, adjustable, 1U, color grey (RAL 7035) or black (RAL 9005)

### Features

- For fixing at the four 19" mounting angles
- Sturdy, perforated sheet steel
- Variable fastening rail: 350 mm to 500 mm in depth
- Front fastening rails are already mounted
- Delivery with complete set of needed fixing material
- Loading capacity up to 50 kg
- Height units: 1U
- Dimensions (HxW): 44.5 x 482 mm
- Packaging dimensions (HxWxD): 55 x 500 x 375 mm
- Weights: 2.38 kg (net); 2.65 (gross)
- Available in color grey (RAL 7035) and black (RAL 9005)

### Product Overview

The shelves are easy to install at the four 19" mounting angles of your DIGITUS® 19" cabinets. Due to the sturdy, perforated sheet steel with high loading capacities, they are the optimal surface for your components. The shelves are available in color light grey (RAL 7035) and black (RAL 9005).

### Product Number Information

- |          |  |
|----------|--|
| DN-97644 | 1U fixed shelf for 600 mm depth cabinets, adjustable, color grey (RAL 7035)  |
| DN-97645 | 1U fixed shelf for 600 mm depth cabinets, adjustable, color black (RAL 9005) |

### More Shelves from DIGITUS®

- |          |   |
|----------|---|
| DN-97646 | 1U fixed shelf for 800 mm depth cabinets, adjustable, color grey (RAL 7035)   |
| DN-97647 | 1U fixed shelf for 800 mm depth cabinets, adjustable, color black (RAL 9005)  |
| DN-97648 | 1U fixed shelf for 1000 mm depth cabinets, adjustable, color grey (RAL 7035)  |
| DN-97649 | 1U fixed shelf for 1000 mm depth cabinets, adjustable, color black (RAL 9005) |

## Conformities

Raw material	DC01-6112
Surface	Electro galvanized (8-12 micron) Electrostatic powder paint (80-120 micron)
Painting	Grey (RAL 7035)

## Standards

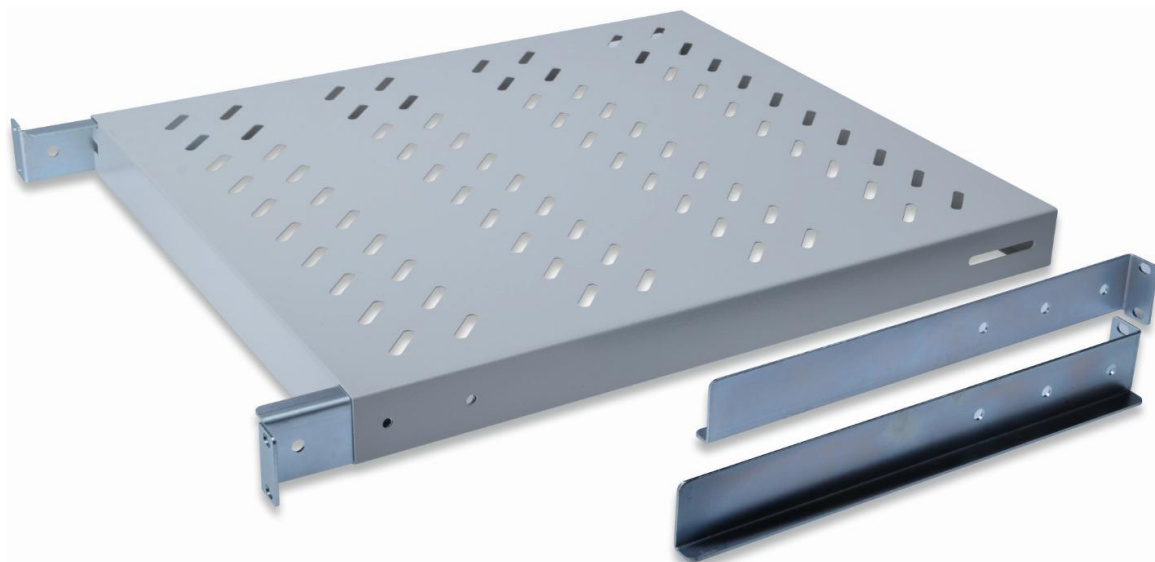
ISO 9001:2008

TSE: EN 61587-1 Mechanical structures for electronic equipment - tests for IEC 60917 and IEC 60297

EN 61587-1/4.2, IEC60068-2-1, IEC60068-2-2, IEC60068-2-30 (climatic and environment)

EN 61587-1/6.3 (flammability)

## Product Images



## Technical Drawings

